

TOORX
PROFESSIONAL LINE

INSTRUCTION



FWX4800

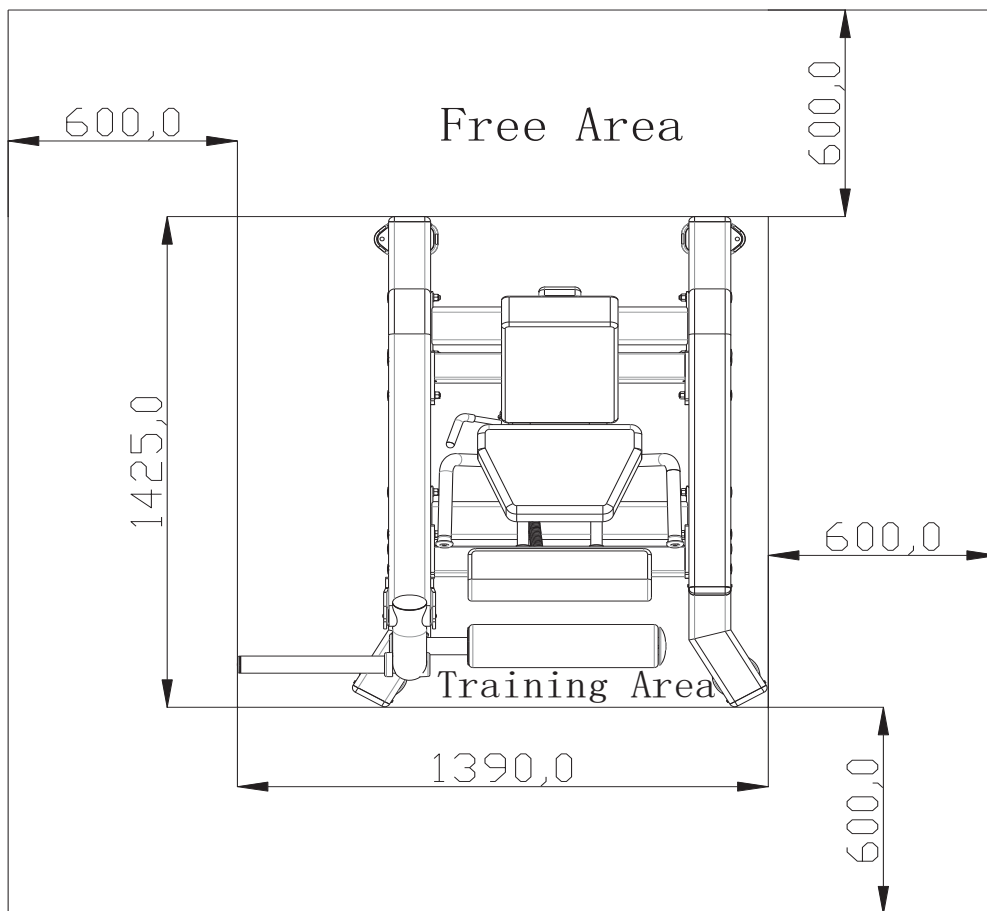


Cod : GRLDTOORXFWX4800

Rev : 00

Ed : 10/19

Training Area and Free Area



Specifications

Class: S

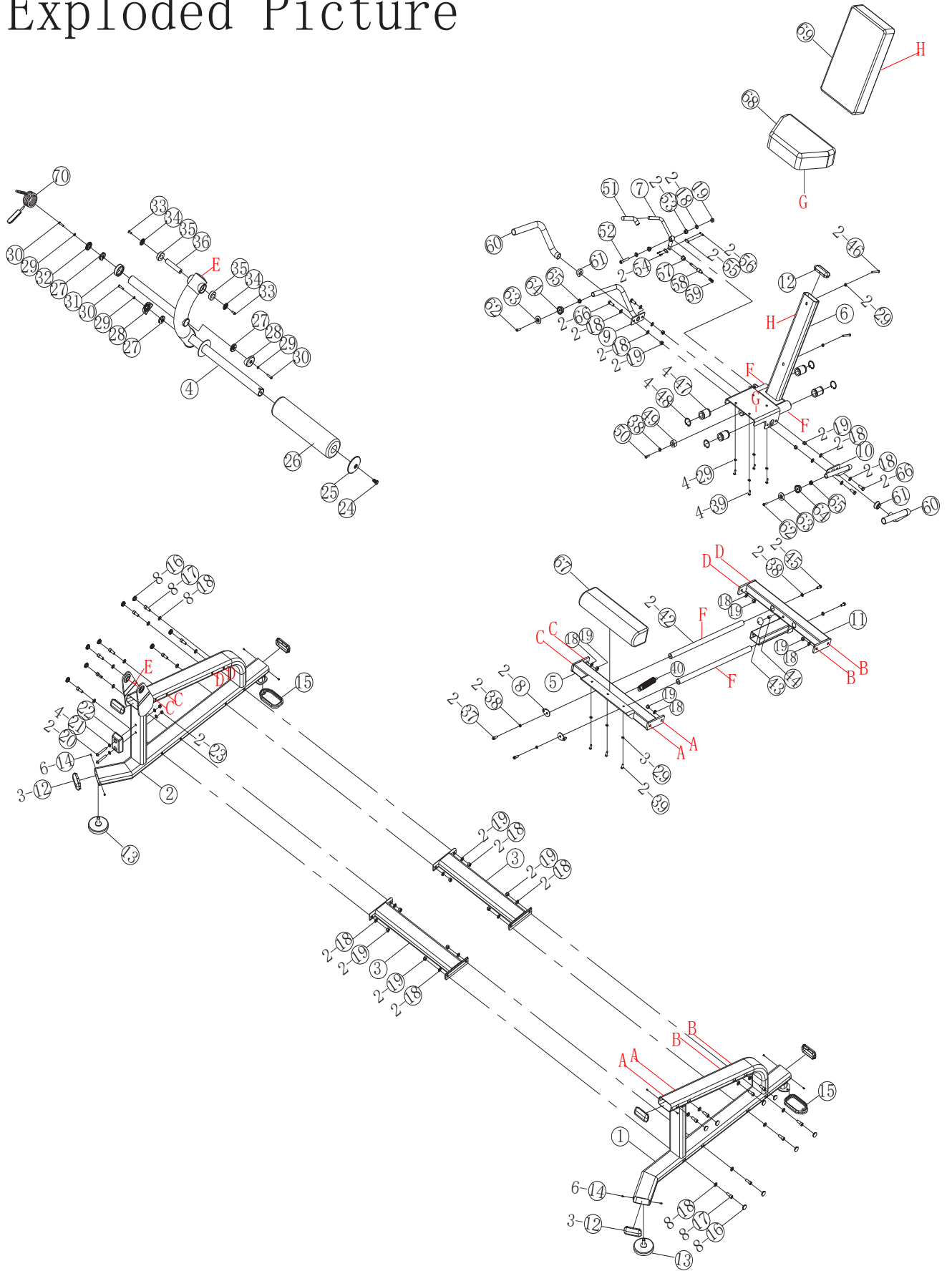
Maximum Wt. Capacity: 60 kg/132 IBS

Maximum User Weight: 135 kg/297 IBS

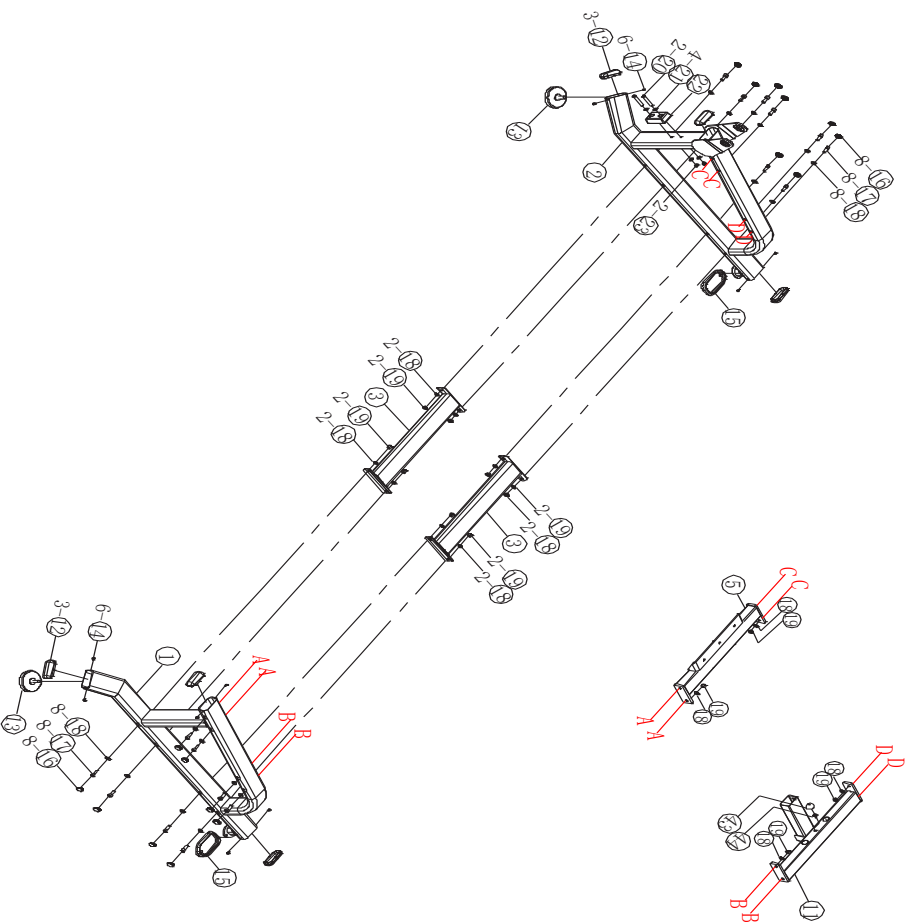
Product Total Surface: 1390*1425

Product Total Mass: 130 kg/286 IBS

Exploded Picture

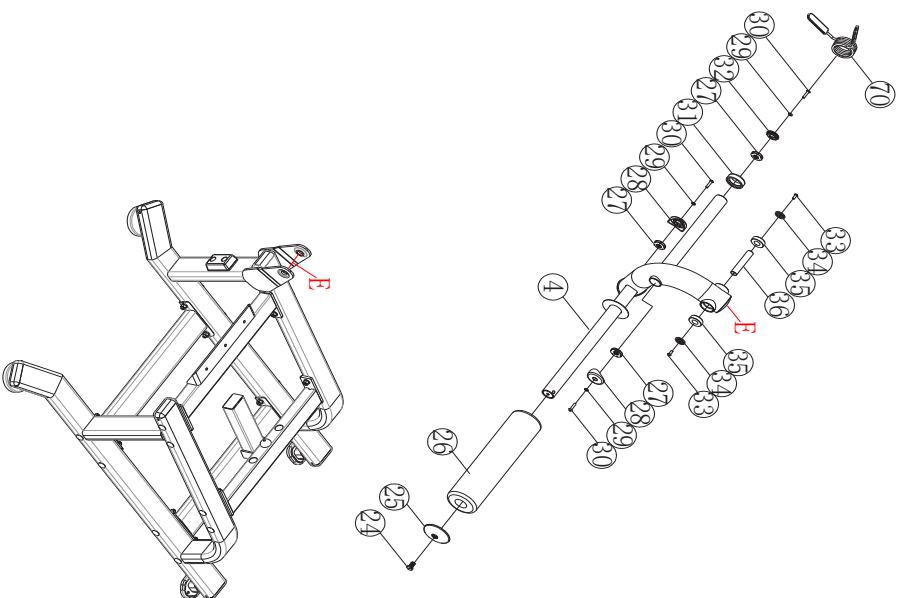


Step. 1



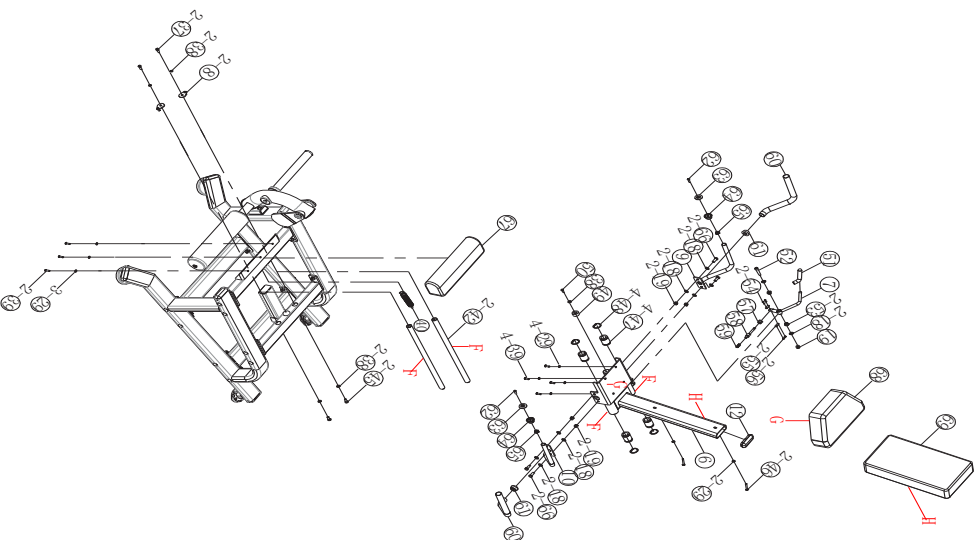
No.	Drawing Number	Name	Specification	Qty
①		Left Floor Frame		1
②		Right Floor Frame		1
③		Bottom Connect Frame		2
⑤		Connect Frame Welding Group		1
⑪		Connect Frame Welding Group		1
⑫		Square Tube Plug50-110		6
⑬		Foot Pad		2
⑭		Cross head self-tapping screw	M4. 2*10	12
⑮		Foot Pad		2
⑯		casing cap		16
⑰		Hexagon socket head cap screws	M12*30	16
⑱		Washer	M12	28
⑲		Lock Nut	M12	12
⑳		Hexagon socket head screw	M10*75	2
㉑		Washer	M10	4
㉒		A-007 Flat Shock Pad with two holes		1
㉓		Lock Nut	M10	2
④③		Nut Rubber Covered		1
④④		M8*1. 5Blind Nut	M8*1. 5	1

Step. 2



NO.	Drawing Number	Name	Speification	Qty
④		Arm of Force Welding Group		1
②④		Self Made Screw		1
②⑤		Foam CapM110		1
②⑥		500 Foam		1
②⑦		Sunflower	∅46*M8	3
②⑧		BB0100		2
②⑨		Washer	M8	3
③⑩		Hexagon socket head screw	M8*35	3
③①		50*70Foot Pad		1
③②		Round Tube Plug		1
③③		Hexagon socket head screw	M8*20	2
③④		Bearing Cap		2
③⑤		Bearing 6205	6205	2
③⑥		Axis of Rotation		1
⑦⑩		Electro Large Jump Ring		1

Step. 3



No.	Drawing Number	Name	Specification	Qty	No.	Drawing Number	Name	Specification	Qty
56		Cotter 5 Jump Ring		2	6		Seat Welding Group		1
57		Self-Made Pull Pin Nut		1	7		Adjusting Welding group		1
58		Pull Pin		1	8		Limit Welding Group		2
59		Black Spring		1	9		Handle Welding Group		1
60		Rubber Sleeve		2	10		Handle Welding Group		1
61		32 Handle Group Ring		2	12		Square Tube Plug50-110		1
62		Hexagon Socket Head Screw	M8*30	2	18		Washer	M12	10
63		32 Handle Group Light Cap		2	19		Lock Nut	M12	5
64		32 Handle Group Thick Cap		2	29		Washer	M8	9
65		20 Sunflower		2	37		Hexagon Socket Head Screw	M10*25	2
66		Outer Six Square Screw	M12*30	4	38		M10 Spring Washer	M10	4
67		G18 Cushion		1	39		Hexagon socket head screw	M8*25	2
68		G19 Cushion		1	40		Spring		1
69		G20 Cushion		1	42		Seat Sliding Bar		2

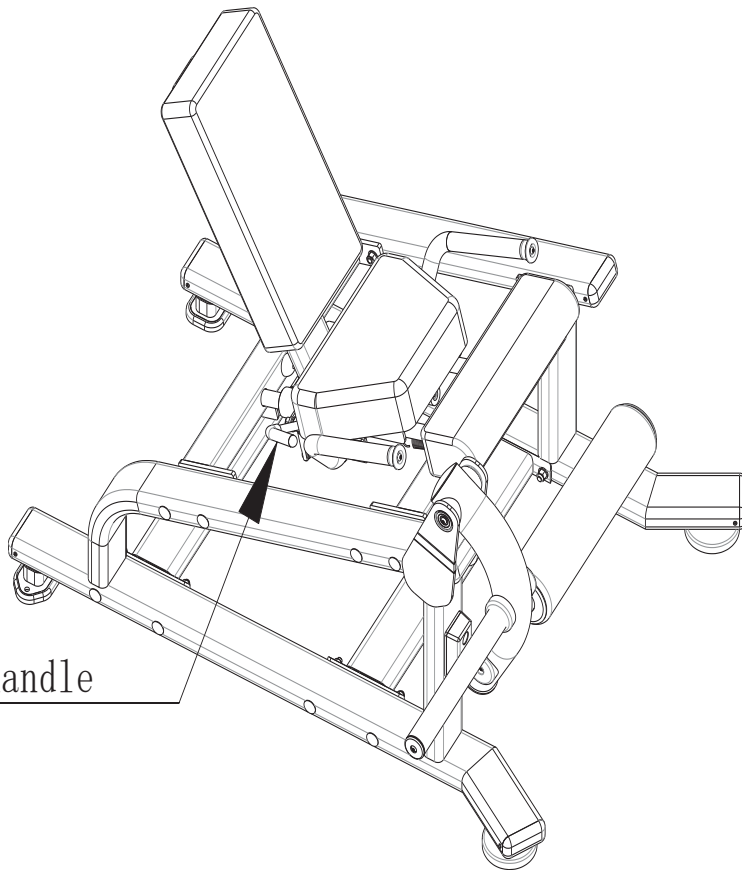
45		Hex Screw	M10*25	2	45		Hex Screw	M10*25	2
46		Hexagon Socket Head Screw	M8*70	2	46		Hexagon Socket Head Screw	M8*70	2
47		Linear Bearing		4	47		Linear Bearing		4
48		Inner Jump Ring		4	48		Inner Jump Ring		4
49		Rubber Pad		1	49		Rubber Pad		1
50		Hexagon Socket Head Screw	M8*20	1	50		Hexagon Socket Head Screw	M8*20	1
51		Yellow Handle		1	51		Yellow Handle		1
52		Hexagon Socket Head Screw	M12*60	1	52		Hexagon Socket Head Screw	M12*60	1
53		Small Sleeve		2	53		Small Sleeve		2
54				2	54				2
55				2	55				2

Adjustment Instructions

Adjustment Instructions of Functional Trainer

Adjustment of Seat

- 1、Lift the seat to adjust the handle and adjust to the proper position to release the handle to insert the socket into the appropriate hole position.
- 2、After adjustment,make sure that the bolt is fully inserted into the pin hole to be used.



Seat adjustment handle



GARLANDO SPA
Via Regione Piemonte, 32 - Zona Industriale D1
15068 - Pozzolo Formigaro (AL) - Italy
www.toorx.it - info@toorx.it